

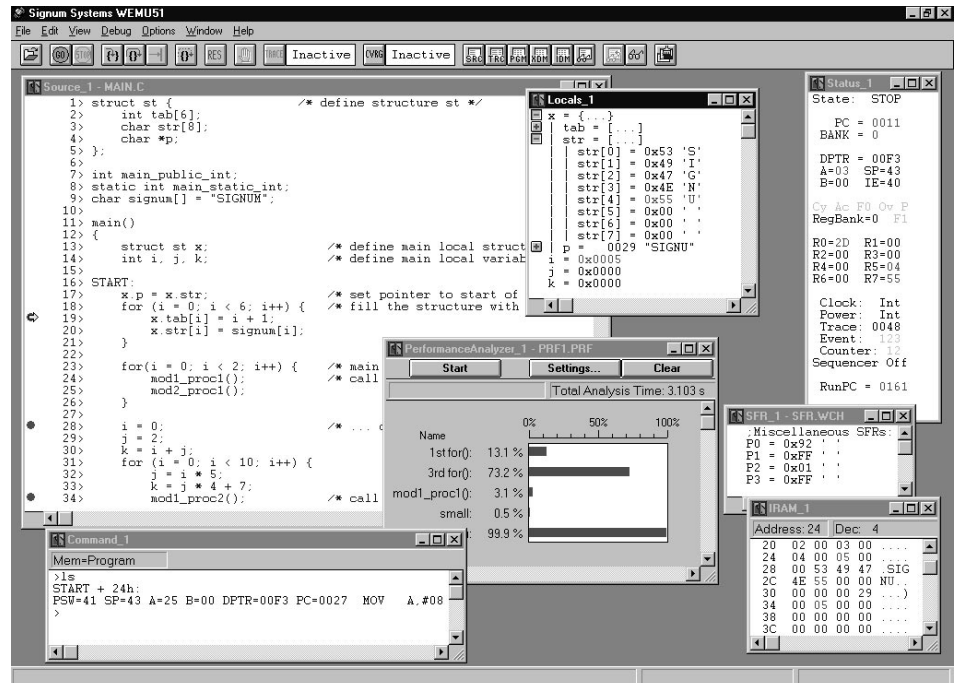
# ICDM-x51 In-Circuit Debugger/Monitor

- Low-Cost In-Circuit Debugger
- Supports Intel 8xC251, 151, and 51 Devices
- Takes Only 1K of Memory Space
- Supports All Speeds and Packages
- HLL Debug For C and PL/M
- Software Breakpoints
- Same GUI For ICE, Simulator & Debugger
- PC Hosted Over a Serial Port
- Choice of Target Interface
- Compatible With Intel's EVM Boards

ICDM-x51 (In-Circuit Debugger/Monitor) offers true real time in-circuit development and debugging in machine code, assembler source, and High Level Language (HLL) modes. It is supplied with Windows 95/NT\* user interface hosted on a PC over a standard serial port. This user interface is common between Signum Systems' In-Circuit Emulator, Simulator, and the Debugger.

With ICDM-x51 you don't have to remove the CPU or buy expensive clip-on devices. Being mainly a software debugger it comes with a small monitor program (DMON-x51) that must be embedded with the user's program. This tiny monitor takes less than 1K of user's memory space and communicates with the host PC over a standard serial port. The user has a choice of resources used for communication with the host: on-chip UART, external UART, or any two available I/O pins. To ensure a quick connection, all necessary cables, connectors, and software ready for linking with all major C compilers and assemblers are included.

The HLL debugger provides support for most of the popular C compilers, including Archimedes, BSO/Tasking, Franklin, IAR, Keil, PLC and 2500AD. Unlimited number of breakpoints and pass-points may be set or cleared with a mouse, by simply clicking on the desired instruction in the Source window. You can watch variables change while stepping, and zoom in



on any member of a complex structure with a click of a mouse.

Since the emulation CPU remains mounted on the user's target board, all electrical characteristics and timing are unchanged during debugging.

## MICROCONTROLLERS SUPPORTED:

8xC251Sx, 8xC151Sx, 80C152Jx, 80C3x, 8xC5x, 8xC51Fx, 80C51GB, 8xL5x, 8xL51Fx

## DEVELOPMENT PLATFORMS:

PC (Intel486™ Microprocessor or Pentium® Processor), Windows 3.1, Windows 95, Windows NT

## AVAILABILITY:

Now

## CONTACT:

Signum Systems  
11992 Challenger Court  
Moorpark, CA 93021

Phone: (800) 838-8012  
(805) 371-4608

FAX: (805) 371-4610

e-mail: sales@signum.com

WWW: <http://www.signum.com>

For international contacts, see Appendix B.

**SIGNUM**  
SYSTEMS